

# Hurst Green Primary School

## 2025 RECEPTION ADMISSIONS





# VISION

Hurst Green Primary School aspires to be a beacon of excellence, where every child is empowered to reach their full potential in a **nurturing, inclusive,** and **inspiring** environment.

Guided by our core values of **respect, compassion, equity, aspiration, collaboration,** and **responsibility,** we strive to cultivate **confident, well-rounded,** and **socially conscious** individuals who are equipped to make a positive impact on the world.

Through a **dynamic, enriching curriculum** and a steadfast commitment to the **holistic development** of our pupils, we aim to unlock the limitless possibilities within each child, preparing them for a **future** of **success** and **fulfilment.**





# About Our School

- 425 pupils
- Two form entry (two classes per year group) – 60 pupil intake
  - **Early Years** – Reception Class
  - **Key Stage 1** – Year 1 and Year 2
  - **Key Stage 2** – Year 3, Year 4, Year 5, Year 6
- Most class sizes below 30 children
- Each class has one teacher (or two teachers job share), and a Teaching Assistant
- We have lots of support staff, including pastoral & SEND specialists, Midday Assistants, Admin and Site Staff



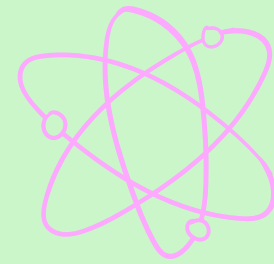
# SENIOR LEADERSHIP TEAM



**Miss Wilson**  
Headteacher



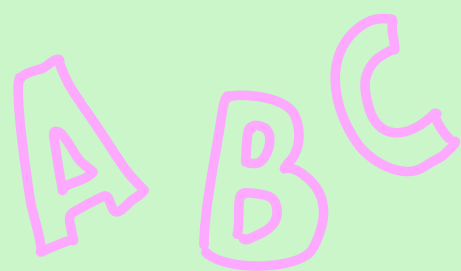
**Mrs Webb**  
Deputy Headteacher



**Mr Lander**  
KS1 Lead &  
Assistant Headteacher



**Mr South**  
KS2 Lead &  
Assistant Headteacher





# SENIOR MANAGEMENT TEAM

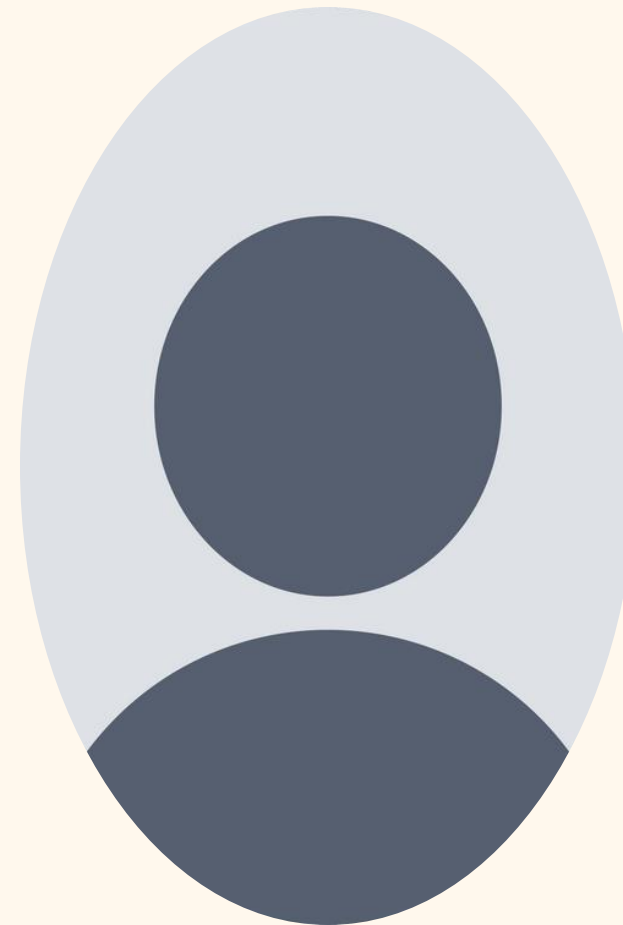


**Mrs Karadia**  
SENDCo

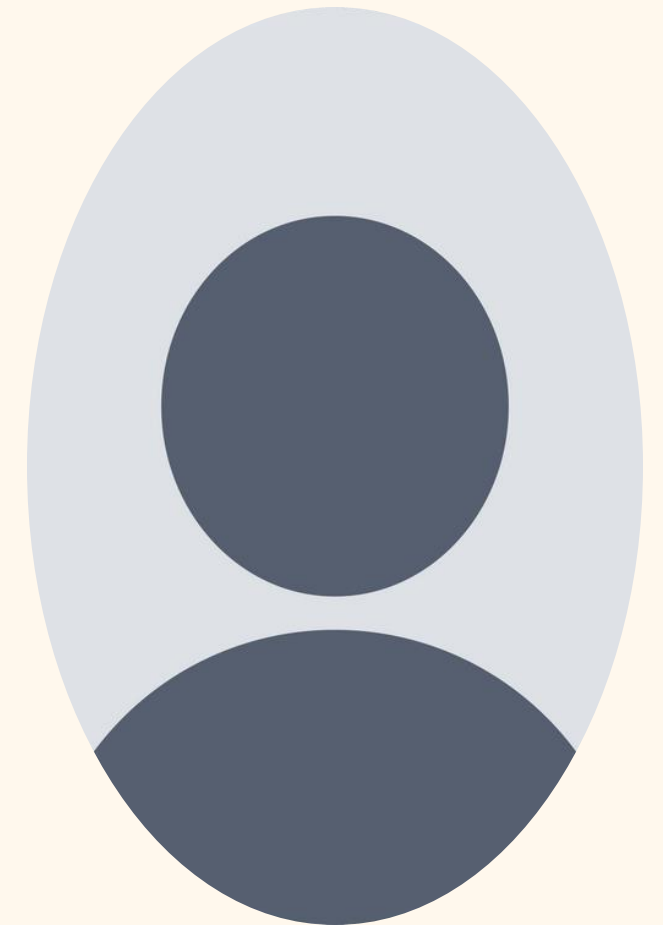


**Mrs Yeomans**  
Early Years Lead

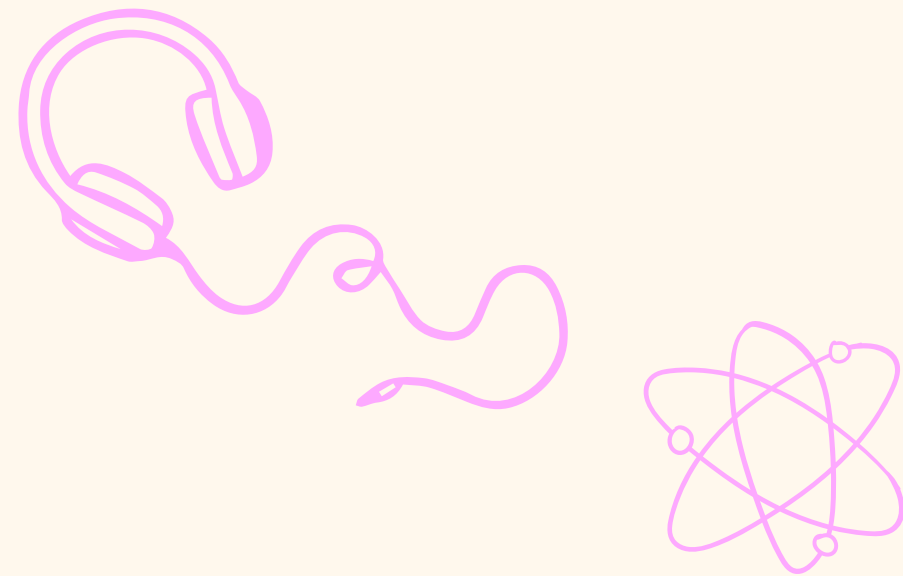
# MIDDLE MANAGEMENT TEAM



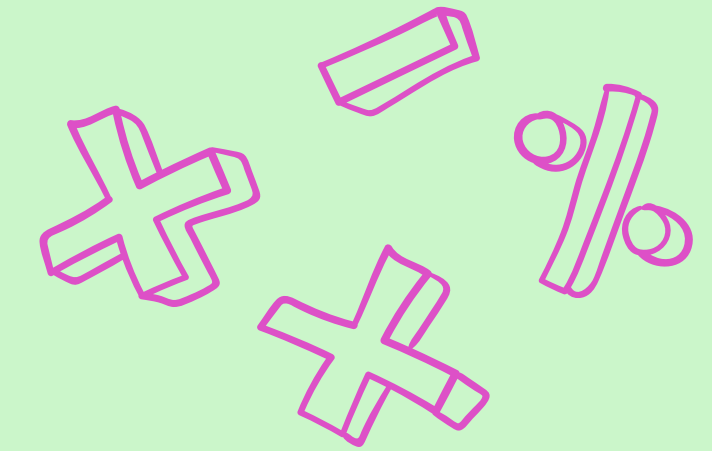
**Mr Rees**  
Year 6 Teacher &  
Maths Lead



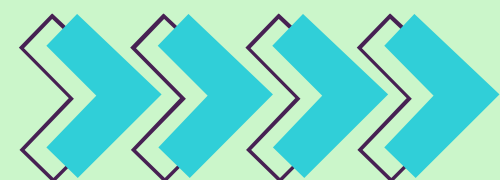
**Mrs Corbett-Evans**  
Year 4 teacher &  
English Lead



# FACILITIES

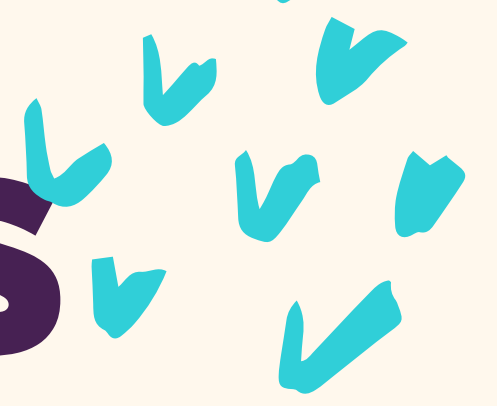


- 14 classrooms
- 1 cooking room/The Orchard SEND Provision
- Large hall
- Sensory room\*
- Nurture room\*
- Play therapy room
- Library
- Large Quad (hopefully will become a library\*)
- Purpose built Sports Hall
- ICT suite (plus several iPad trolleys)
- Multiple offices and admin rooms
- Intervention rooms
- Extensive outdoor space, including a large field
- Developing Forest School area

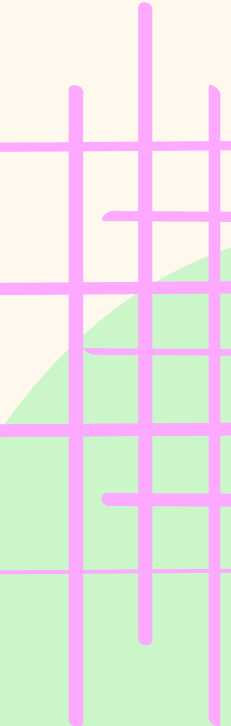




# WIDER OPPORTUNITIES



- Musical instrument instruction in Year 3
- Trips and visits twice per year, including Year 6 week-long residential
- Extra-curricular clubs
- Inter and intra-school competitions
- Peripatetic instrument tuition
- Growing range of Pupil Leadership roles:
  - School Council, Eco, Social Impact, Happiness Heroes, Reading Ambassadors etc.







# CURRICULUM



Whole school journey



Knowledge Organisers



Detailed vocabulary



Chronological



Cross Curricular



Big Questions





# WRAP AROUND CARE



## JACK IN THE BOX DAY NURSERY

PRIVATELY RUN REGISTERED  
CHILDMINDER ON OUR SITE.





# INDUCTION ARRANGEMENTS

## Before Starting

- Nursery visits from EYFS staff
- Series of induction days, building gradually up to spending a morning and having lunch
- Stay and Play events
- Parents' Induction Evening in Summer Term

## After Starting

- Children in full time within the first week
- Reading Parents' Meeting in September
- 'Welcome Wednesday' in October
- Phonics Parents' Meeting in Autumn Term
- First Parents' Consultation Evening in Autumn Term





# APPLICATIONS



You MUST complete an application form either online at [www.dudley.gov.uk/admissions](http://www.dudley.gov.uk/admissions) or by completing an application form from your home local authority by **15th JANUARY 2025**. You can include five school preferences on the application; there is nothing to gain by only putting one preference.

**Applications will be available from 1 October 2024.**

## **Benefits of applying online**

- E-mail decision received by 2pm on day of offer
- It's quick and easy to use
- You can apply 24 hours a day, 7 days a week
- There's no risk that your application will be lost in the post
- You will get email confirmation that your application has been received
- It's safe and secure

The online system will be available 24 hours a day, 7 days a week from 1 October 2024 until the closing date for applications on 15 January 2025.

For further information please contact **Dudley School Admissions Service on 0300 555 2345.**





# CONTACT US

if you want to contact us or want more detailed information, do so using the details below:



**01384 818210**



**info@hurst-green.dudley.sch.uk**



**www.hurstgreen-dudley.co.uk**







**THANK YOU!**